

Surrey LTD.

2025



SURREY LTD.

Contents



SURREY LTD.

Foreword

It's with great pride that we present our first Surrey LTD Report for 2025, celebrating the outstanding achievements and resilience of Surrey's privately-owned business community over the past year.

Despite a challenging economic landscape, Surrey's top 100 companies have demonstrated remarkable adaptability and ambition, collectively generating a total turnover of £13 billion and employing nearly 55,000 people across the county. While EBITDA (earnings before interest, depreciation and amortisation) dropped 10.2% to £1.4 billion from the previous year, average remuneration rose by 4.5% to £50,000, underscoring the region's commitment to rewarding talent and driving growth.

Surrey's business landscape is defined by its diversity and sectoral strength:

- Real estate and construction remains a cornerstone, contributing £4 billion in turnover, reflecting sustained infrastructure investment
- Manufacturing and industrial follows closely at £3.5 billion
- Business support services (BSS) saw robust growth, with turnover up 27.9% and EBITDA surging by 69.6%
- Private healthcare experienced an extraordinary 537.8% increase in EBITDA, highlighting innovation and operational excellence

Surrey's global connectivity is equally impressive. The 25 largest subsidiaries of internationally-owned companies contributed a staggering £62.5 billion in turnover, with ownership spanning the USA, Germany, South Korea, Japan, and beyond—affirming Surrey's role as a gateway for international investment and expertise.

At the local level, Guildford leads with the largest number of companies in the top 100 (12%), closely followed by Woking (7%). Leatherhead distinguishes itself with the highest total turnover of any Surrey town, reaching £2.5 billion—a clear indicator of its economic vitality and leadership within the county.

Beyond these headline figures, Surrey boasts a thriving ecosystem of high-growth SMEs, a strong innovation corridor linked to leading universities, and a reputation for green initiatives and sustainable development, making it one of the UK's most dynamic regional economies.

These achievements aren't just numbers, they represent the collective ambition, innovation, and resilience of Surrey's business community. We extend our heartfelt congratulations to all the businesses featured in this year's report. Your success is a source of inspiration and a driving force for Surrey's continued growth and prosperity.



David Willott
Tax Partner



Jon Oakey
Audit Partner



SURREY LTD.

About

Surrey LTD is part of an annual series of business analysis by UK county which seeks to highlight and celebrate some of the county's most successful, privately-owned businesses, and provide them with the recognition they deserve for their contribution to the region and wider UK economy.

We begin this report by reviewing the county's 100 largest privately-owned companies, based upon turnover, providing an insight into the scale of Surrey's privately-owned and PE-backed business community. In analysing the financial performance of the region, we've also looked at two core metrics over three years:

- Growth in turnover
- Average EBITDA margin

We've chosen to look at these two metrics as they provide an indication of scale of the businesses in the region as well as the contribution to the economy. The report highlights the top 25 within each category, providing a yardstick against which the county can assess its economic performance, and businesses can benchmark themselves against their peers. Finally, we look at Surrey's largest international businesses who are significant contributors to the local economy.

Our methodology explained

Surrey LTD. 2025 is compiled using the most recent publicly available accounts (as of 23 July 2025) of Surrey's private businesses.

The report excludes companies that are listed, owned by listed businesses, schools, trusts, charities, and businesses that are subsidiaries of overseas companies. We've also compared our data with prior year results to provide an insight into economic trends across sectors.

Inevitably, there's an unavoidable time delay between the availability of data utilised and the ultimate presentation of this report, alongside differing year-ends to consider.

SURREY LTD.

At a glance

Turnover range

**£31.6m -
£2.3bn**



Fixed assets
£11.4bn

↑ **+7.7%**
from PY



Employees
54,946

↑ **+12%**
from PY



Turnover
£13bn

↑ **+5%**
from PY



EBITDA
£1.4bn

↓ **-10.2%**
from PY



Long-term debt
£9.2bn

↑ **+3.7%**
from PY



Shareholder funds
£3.2bn

↑ **+4.3%**
from PY



Average
remuneration
£50k

↑ **+4.5%**
from PY

Top 100 companies

Our Top 100 list is compiled using the most recent publicly available accounts as at 23rd July 2025 and is based on those businesses which are both owned and managed within Surrey.

01 - 20

- 01 WATES GROUP LIMITED
- 02 SCOTIA GAS NETWORKS LIMITED
- 03 KELTBRAV GROUP LIMITED
- 04 GARDEN CARE HOLDCO LIMITED
- 05 NIJJAR GROUP FRESHWAY HOLDINGS LIMITED
- 06 BRISTOW HELICOPTERS LIMITED
- 07 OHOB HOLDINGS LIMITED
- 08 OCTAVIUS INFRASTRUCTURE LTD.
- 09 DERIVCO HOLDINGS LIMITED
- 10 JAMES WALKER GROUP LIMITED
- 11 NEWSHIP LIMITED
- 12 WILSONS AUTOMOBILES AND COACHWORKS LIMITED
- 13 NURTURE LANDSCAPES HOLDINGS LIMITED
- 14 SHL GLOBAL MANAGEMENT LIMITED
- 15 DRIFT BRIDGE GROUP HOLDINGS LIMITED
- 16 GREENSHIELDS JCB HOLDINGS LIMITED
- 17 HY-TEN GROUP LIMITED
- 18 SUGARICH LIMITED
- 19 PGA EUROPEAN TOUR PRODUCTIONS LIMITED
- 20 CROUDACE HOMES GROUP LIMITED

21 - 40

- 21 GORDON MURRAY GROUP HOLDINGS LIMITED
- 22 OLIVER BONAS LIMITED
- 23 HEDIN AUTOMOTIVE LONDON LTD
- 24 MOUNTFITCHET GROUP LIMITED
- 25 CIRCLE FOODS LIMITED
- 26 NEWPORT GROUP (HOLDINGS) LIMITED
- 27 CONSTANTINE GROUP LIMITED
- 28 COINFORD HOLDINGS LIMITED
- 29 PROAV HOLDINGS LIMITED
- 30 ROMANS INTERNATIONAL GROUP LIMITED
- 31 ATHENA INFINITE SPIRIT LTD
- 32 ANN SUMMERS (UK) HOLDINGS LIMITED
- 33 TOPDACH LIMITED
- 34 NUTFIELD HOLDINGS LIMITED
- 35 GIGGLING RESTAURANTS LTD
- 36 KOREA FOODS COMPANY LIMITED
- 37 CISILION (GROUP) LIMITED
- 38 SIAN WHOLESALE LIMITED
- 39 LUIGI TOPCO LIMITED
- 40 F.G. BARNES & SONS LIMITED

41 - 60

- 41 CENTRAL SURREY HEALTH LIMITED
- 42 4TH DIMENSION INNOVATION LIMITED
- 43 PE LIMITED
- 44 TC FACILITIES MANAGEMENT LIMITED
- 45 STARK SOFTWARE INTERNATIONAL (HOLDINGS) LIMITED
- 46 GALAGO LIMITED
- 47 BURHILL GROUP LIMITED
- 48 AUDLEY GROUP LIMITED
- 49 LANDMARK CE HOLDINGS LIMITED
- 50 NATTA BUILDING COMPANY LIMITED
- 51 VIADEX LIMITED
- 52 STORM GLOBAL LTD
- 53 LONGACRES GARDEN CENTRE LIMITED
- 54 LE LIEN LIMITED
- 55 TBG HOLDING C LIMITED
- 56 STANDLEY HOLDINGS LIMITED
- 57 PAX TECHNOLOGY EUROPE LIMITED
- 58 KENNETH GREEN ASSOCIATES LIMITED
- 59 MEACO HOLDINGS LIMITED
- 60 WHATMORE HOLDINGS LIMITED

SURREY LTD.

Top 100 companies

61 - 80

- 61 SMITH AND BYFORD LIMITED
- 62 TREVELLYAN DEVELOPMENTS LIMITED
- 63 T.W. WHITE & SONS (HOLDINGS) LIMITED
- 64 UNILY GROUP LIMITED
- 65 BLACKSTOWN HOLDINGS LIMITED
- 66 ABL 1 TOUCH GROUP LIMITED
- 67 TONY GEE AND PARTNERS LLP
- 68 ALINA CARE HOLDINGS LIMITED
- 69 CODY MANAGEMENT SERVICES LTD
- 70 AION TOPCO LIMITED
- 71 ADVANCE TRS LTD.
- 72 SETFORDS GROUP LIMITED
- 73 KAIZEN ENTERTAINMENT LIMITED
- 74 EO GROUP LTD
- 75 MARTIN TOPCO LIMITED
- 76 STEVENS & BOLTON LLP
- 77 ISON MANAGEMENT LIMITED
- 78 MAINPAY LIMITED
- 79 GLUCO RX LIMITED
- 80 KINETROL LIMITED

81 - 100

- 81 ASPECT MAINTENANCE GROUP LIMITED
- 82 PAN UNITED LTD
- 83 PRMG HOLDINGS LIMITED
- 84 BLAKEDOWN ENVIRONMENT & LEISURE LTD
- 85 VISION ENGINEERING LIMITED
- 86 UNI HOLDINGS 1 LTD
- 87 EFM GLOBAL HOLDINGS LIMITED
- 88 CELTIC CONTRACTORS LIMITED
- 89 HERD GROUP LIMITED
- 90 A.W. CHAMPION HOLDINGS LIMITED
- 91 HEALIX INTERNATIONAL GROUP LIMITED
- 92 EVENTIST GROUP LIMITED
- 93 LES CAVES HOLDINGS LIMITED
- 94 BURWATER HOLDINGS LIMITED
- 95 WEDO DEVELOPMENTS LTD
- 96 KPH GROUP LIMITED
- 97 RUSSELL CAWBERRY LIMITED
- 98 RYEMARC LIMITED
- 99 BUXTON BUILDING CONTRACTORS LIMITED
- 100 CHD SURREY LTD

Sector breakdown

Consumer

Turnover range

£34m - £452m


Turnover

£2.1bn
Change
from PY
-1.5%


EBITDA

£172m
+15.6%


Employees

10,241
+9.8%
Average
wages
£27k
-4.1%
21
Total
companies

9

Retail

8

Food and
beverage

3

Other

1

Leisure

Manufacturing and industrial

Turnover range

£33.9m - £1.4bn


Turnover

£3.5bn
Change
from PY
+2.1%


EBITDA

£720m
-19.4%


Employees

10,881
+13.3%
Average
wages
£67k
+14.4%
17
Total
companies

8

Automotive

4

Manufacturing

2

Aerospace

1

Construction

1

Other

1

Oil and gas

Sector breakdown

Other

Turnover range

£32m - £196m

Turnover

£1.2bnChange
from PY**-13.8%**

EBITDA

£123m**-16.2%**

Employees

7,068**+14.1%**Average
wages**£33k****-8.5%****16**Total
companies**16**

Generic SIC

Real estate and construction

Turnover range

£31.8m - £2.3bn

Turnover

£4bnChange
from PY**+12.7%**

EBITDA

£62m**-43.8%**

Employees

9,375**+17.3%**Average
wages**£60k****+0.3%****16**Total
companies**14**

Construction

2

Real estate

Sector breakdown

Business support services

Turnover range

£34.6m - £161m


Turnover

£768m
Change
from PY
+27.9%


EBITDA

£88m
+69.6%


Employees

8,466
+11.2%
Average
wages
£25k
+2.2%
12
Total
companies

5

Professional
practices

3

Other

3

Recruitment

1

Facilities

Technology, media and telecomms

Turnover range

£44.4m - £211m


Turnover

£964m
Change
from PY
+15.8%


EBITDA

£165m
+2.5%


Employees

3,783
+10.1%
Average
wages
£55k
+2.0%
11
Total
companies

8

Technology

2

Media

1

Telecomms

Sector breakdown

Private healthcare

Turnover range

£31.6m - £73m

Turnover

£251mChange
from PY**+0.9%**

EBITDA

£19m**+537.8%**

Employees

4,426**+2.8%**Average
wages**£26k****+4.4%****5****Total
companies****4**Healthcare
services**1**Pharma
and biotech

Financial services

Turnover range

£70.8m - £110m

Turnover

£180mChange
from PY**+7.6%**

EBITDA

£14m**+35.8%**

Employees

706**+21.5%**Average
wages**£36k****-7.9%****2****Total
companies****1**Asset
management**1**

Insurance

SURREY LTD.

Fastest growing businesses by turnover growth

We review the top 25 businesses in the region based on turnover growth over a three-year period.

01 - 15

- 01 BLUE DIAMOND PUMPS LTD
- 02 EVENTIST GROUP LIMITED
- 03 PRMG HOLDINGS LIMITED
- 04 HISTORIC ROYAL PALACES ENTERPRISES LIMITED
- 05 ESCAPADE GROUP LIMITED
- 06 LUIGI TOPCO LIMITED
- 07 SURREY HILLS TRADING LIMITED
- 08 ATHENA INFINITE SPIRIT LTD
- 09 WEST HORSLEY DAIRY LIMITED
- 10 J5C MANAGEMENT LIMITED
- 11 PEARMAIN PUBS LTD
- 12 SUN HOTEL LIMITED
- 13 OATLANDS INVESTMENTS LIMITED
- 14 TOPDACH LIMITED
- 15 BOB POTTER LEISURE LIMITED

16 - 25

- 16 ABRIDGE VEHICLE MANAGEMENT LIMITED
- 17 4TH DIMENSION INNOVATION LIMITED
- 18 VERTICAL PHARMA RESOURCES LIMITED
- 19 GREENSHIELDS JCB HOLDINGS LIMITED
- 20 BEAVERBROOK HOLDINGS LIMITED
- 21 BURHILL GROUP LIMITED
- 22 GIGGLING RESTAURANTS LTD
- 23 FENNIES DAY NURSERIES LIMITED
- 24 [REDACTED]
- 25 NURTURE LANDSCAPES HOLDINGS LIMITED

Fastest growing by average EBITDA margin

We also look at the 25 fastest growing businesses with the highest EBITDA CAGR growth percentage as per their latest accounts (over a three-year period), whereby the latest year EBITDA is greater than £1 million.

01 - 15

- 01 HISTORIC ROYAL PALACES ENTERPRISES LIMITED
- 02 BLUE DIAMOND PUMPS LTD
- 03 DRUMGRANGE LIMITED
- 04 PRMG HOLDINGS LIMITED
- 05 BEAVERBROOK HOLDINGS LIMITED
- 06 SUN HOTEL LIMITED
- 07 SURREY HILLS TRADING LIMITED
- 08 [REDACTED]
- 09 REPAIRCRAFT (UK) LIMITED
- 10 THE SIEMON COMPANY LIMITED
- 11 OATLANDS INVESTMENTS LIMITED
- 12 KELTBRAV GROUP LIMITED
- 13 LANGBOURN PROPERTIES LIMITED
- 14 ABRIDGE VEHICLE MANAGEMENT LIMITED
- 15 LES CAVES HOLDINGS LIMITED

16 - 25

- 16 CONSTANTINE GROUP LIMITED
- 17 STANHOPE-SETA HOLDINGS LIMITED
- 18 TC FACILITIES MANAGEMENT LIMITED
- 19 WILSONS AUTOMOBILES AND COACHWORKS LIMITED
- 20 GREENSHIELDS JCB HOLDINGS LIMITED
- 21 4TH DIMENSION INNOVATION LIMITED
- 22 BRAMLEY HEALTH HOLDING COMPANY LIMITED
- 23 OLIVER BONAS LIMITED
- 24 PERSON CENTRED SOFTWARE LIMITED
- 25 KENDALL CARS LIMITED

International contributors

International companies are significant contributors to the overall health of Surrey's economy and so we're shining a spotlight on the 25 largest subsidiaries of internationally-owned companies by turnover in the county.

01 - 15

- 01 ESSO PETROLEUM COMPANY, LIMITED
- 02 LIDL GREAT BRITAIN LIMITED
- 03 ALLIANCE HEALTHCARE (DISTRIBUTION) LIMITED
- 04 SAMSUNG ELECTRONICS (UK) LIMITED
- 05 TOYOTA(G.B.) PLC
- 06 KIA UK LIMITED
- 07 HYUNDAI MOTOR UK LIMITED
- 08 SPECIALITY CHEMICALS INTERNATIONAL LIMITED
- 09 ENTERPRISE RENT-A-CAR EUROPEAN HOLDINGS LIMITED
- 10 KUWAIT PETROLEUM INTERNATIONAL AVIATION COMPANY (U.K.) LIMITED
- 11 ASTELLAS PHARMA EUROPE LTD.
- 12 KIMBERLY-CLARK EUROPE LIMITED
- 13 FUTURE ELECTRONICS LIMITED
- 14 AIR PRODUCTS EQUIPMENT LIMITED
- 15 BOC LIMITED

16 - 25

- 16 KELLOGG BROWN & ROOT HOLDINGS LIMITED
- 17 BIRDS EYE LIMITED
- 18 SIEMENS HEALTHCARE LIMITED
- 19 ISS FACILITY SERVICES LIMITED
- 20 TOWERS WATSON LIMITED
- 21 SK HYNIX UK LIMITED
- 22 DAIRY CREST LIMITED
- 23 UNUM LIMITED
- 24 LG ELECTRONICS U.K. LTD
- 25 SUBSEA 7 INTERNATIONAL CONTRACTING LIMITED

Total turnover

£62.5 billion



USA



Ireland



Germany



British Virgin Islands



South Korea



Denmark



Japan



Canada



Kuwait



Luxembourg



Taiwan

About Grant Thornton

What does a business need now?
An adviser that offers a different
experience. A better experience.
One that delivers technical expertise
and a service that goes beyond.
Personal, proactive, and agile.

That's Grant Thornton.

We are the UK member firm of a global network that employs 76,000 people in over 150 markets. We combine global scale with local insight and understanding to give you the assurance, tax, and advisory services you need to realise your ambitions.

We go beyond business as usual, so you can too. We make business more personal by investing in building relationships.

Whether you're growing in one market or many, you consistently get a great service you can trust. We work at a pace that matters – yours – bringing both flexibility and rigour. We celebrate fresh thinking and diverse perspectives to bring you proactive insights and positive progress.

5,000+

UK employees

200+

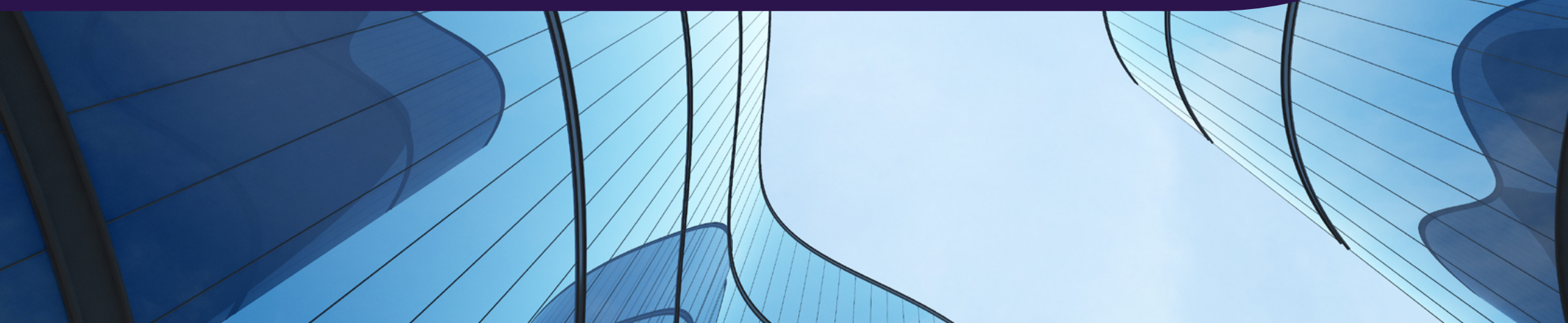
UK partners

150+

Markets

23

UK offices



SURREY LTD.

Meet our team



Heather Boden

Audit Director

T +44 (0)129 355 4137

E heather.c.boden@uk.gt.com



Jon Oakey

Audit Partner

T +44 (0)129 355 4068

E jon.p.oakey@uk.gt.com



Will Rose

Corporate Finance Director

T +44 (0)7971 475 122

E will.r.rose@uk.gt.com



Isabel Thomas

International Tax Director

T +44 (0)129 355 4028

E isabel.r.thomas@uk.gt.com



David Willott

Tax Partner

T +44 (0)1865 799 891

E david.j.willott@uk.gt.com



Andy Wood

Audit Partner

T +44 (0)118 983 9676

E andy.wood@uk.gt.com

© 2026 Grant Thornton UK LLP and Grant Thornton UK Advisory & Tax LLP. All rights reserved.

'Grant Thornton' refers to the brand under which the Grant Thornton member firms provide assurance, tax and advisory services to their clients and/or refers to one or more member firms, as the context requires. Grant Thornton UK LLP and Grant Thornton UK Advisory & Tax LLP are member firms of Grant Thornton International Ltd (GTIL). GTIL and the member firms are not a worldwide partnership. GTIL and each member firm is a separate legal entity. Services are delivered by the member firms. GTIL does not provide services to clients. GTIL and its member firms are not agents of, and do not obligate, one another and are not liable for one another's acts or omissions. This publication has been prepared only as a guide. No responsibility is accepted by us for loss occasioned to any person acting or refraining from acting as a result of any material in this publication. DTSK-11986

