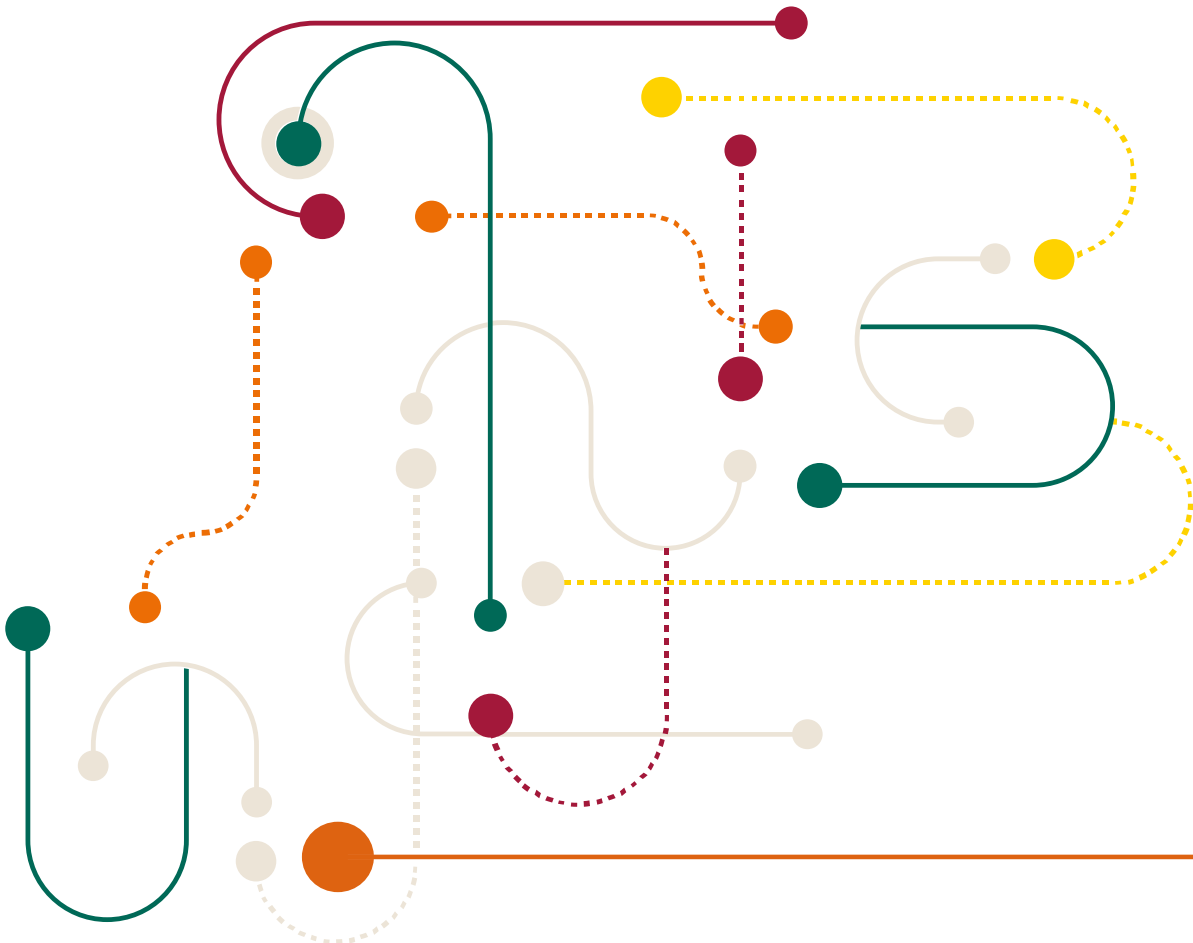


IFRS 17 – What you should be doing now

March 2017

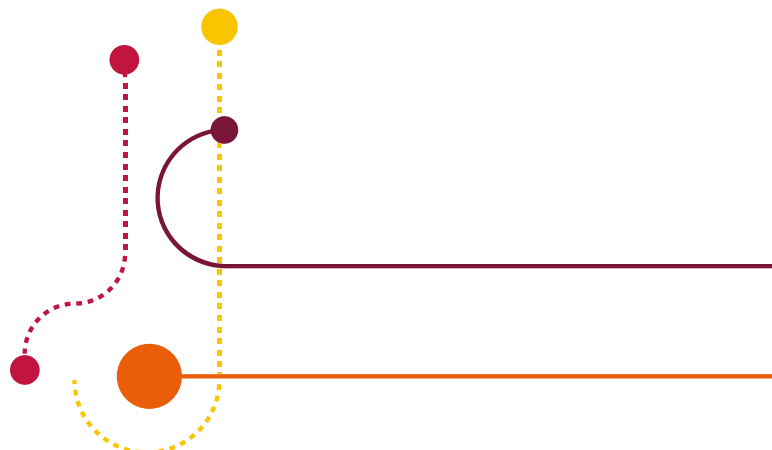


Introduction

The International Accounting Standards Board (IASB) is finalising a new reporting standard that will be applicable to all insurance contracts.

The forthcoming standard, which aims to increase reporting comparability within the industry will represent a significant change to insurers both in terms of the financial result and the finance and actuarial operating model including people, systems and processes.

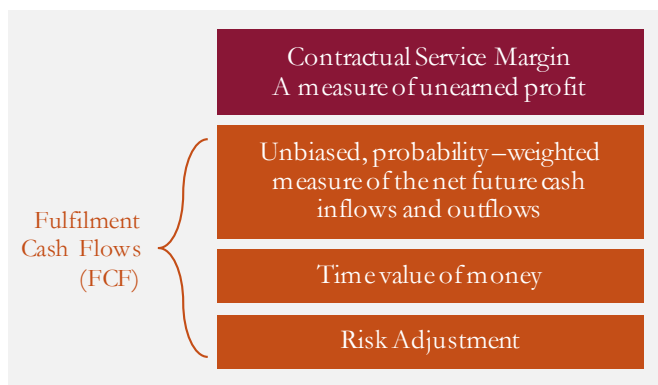
Evolution over time



Technical & historical overview

Key Issues for consideration and the Contractual Service Margin

In order to calculate the Contractual Service Margin (CSM), the Fulfilment Cash Flows (FCF) are used. The components of the FCF are shown below:



Calculation and subsequent adjustment of the CSM will require significant changes to data, processes and systems.

Other key technical considerations:

Transition arrangements

Companies will need to apply retrospectively and restate previous years' results under IFRS 17

Level of aggregation

Contracts will be grouped depending on whether they are profitable or are/expected to become onerous

Impact of changes in discount rates – presentation in Profit or Loss (P&L) and Other Comprehensive Income (OCI) – policy choices will have to be made

Participating contracts and short term contracts

These will be measured using different approaches to the general 'building block' approach

The technical requirements will have significant financial impact. Data, systems and processes will require effective transformation.

Insight on some of the technical requirements

Level of aggregation

If a contract is profitable on day one, the recognition of this profit is postponed through the setting up of a Contractual Service Margin (CSM). If a contract is loss making on day one (ie onerous), the loss has to be recognised immediately in Profit or Loss.

If companies were allowed to group profitable and loss making contracts together, this would be beneficial to the company as the losses would be offset by profits on other contracts, therefore would effectively not be recognised immediately.

During the Standard deliberations, there were concerns that IFRS 17 would require companies to perform the calculation at a very granular level. This would be operationally complex and may not be consistent with how the business is written.

In the latest discussions, the International Accounting Standards Board (IASB) clarified that companies could aggregate policies within a single issue year, but not across years. Companies will also be required to separate policies into the following groups:

- those that are profitable at outset and are unlikely to become onerous
- those that are profitable at outset and may become onerous
- those that are onerous at outset.

These requirements are somewhat more relaxed than originally feared, but will still require significant work and judgement to determine which category to allocate products.

Transition

IFRS 17 should be applied retrospectively to all contracts in force at the date of transition, using reasonable and supportable information but without hindsight to estimate the effect on the opening balance sheet. Historic databases may not be sufficiently granular, complete or accurate on key data points like discount rates, pre-contract cash flows and changes in estimates affecting the CSM. However, any modifications or the use of fair value approaches must be justified as the only practicable alternatives to full retrospection.

Further challenges arise from the policy options available under IFRS 17. They relate to scoping of certain guarantees and fixed fee service contracts, presentation of the impact of changes in discount rates between OCI and Profit or Loss, treatment of changes in the fair value of options and guarantees under the variable fee approach where risk mitigation strategies are employed and the designation of investments.

Therefore insurers should exercise caution not to undermine by their transitional arguments the reliability of judgements, systems, data and processes which will later underpin reporting on new business post transition. Disclosures on these blocks of in-force and new business have to be made separately post transition, therefore any decisions will have a lasting effect on reporting performance, managing capital and steering product development.

Modifications to the general model

Modifications to the standard 'building blocks' approach are allowed in certain circumstances. The implications of these modifications include the treatment of participating contracts and the Premium Allocation Approach.

Treatment of participating contracts

The treatment of participating contracts is an area that has attracted significant debate. In the UK, this would include with-profits and unit linked contracts.

Under the previously proposed requirements, companies felt this would introduce significant volatility into the IFRS results. As a result, the concept of the variable fee approach was developed.

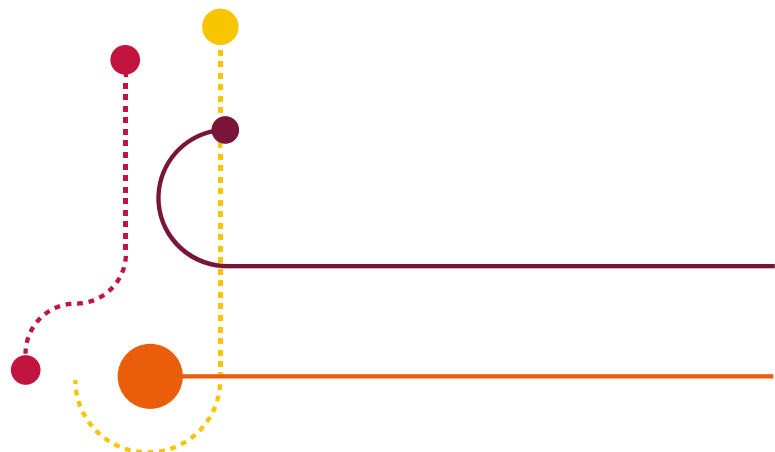
Under this approach, companies are able to offset changes in the entity's share of economic experience against the contractual service margin where formal risk mitigation strategies are employed. This has helped to alleviate the concerns of companies writing significant volumes of this type of business.

Premium Allocation Approach (PAA)

General insurers will also face implementation challenges and may not be able to ride solely on using the Solvency II implementation work around claims liabilities valuation.

The PAA approach is permitted but not mandated, meaning that insurers will still need to demonstrate that they achieve a good approximation of the building block approach for their products (eg multi-year contracts with non-adjustable premiums and engineering or construction covers may pose a particular challenge). Policy choices have to be made around acquisition expenses and accretion of interest/discounting for contract periods less than 12 months.

The application of the PAA approach in parallel with the specific model for reinsurance contracts held may lead to operational complications too. If an insurer chooses to disaggregate insurance finance income and expense between OCI and Profit or Loss, the requirement to use historic discount rates at contract inception rather than the date when the first claim was reported may require changes in the data collection and analysis routines.



Our step by step approach

We will be your partner for your implementation journey and can assist you in a full scale end-to-end implementation or with aspects of your program. We offer a pragmatic solution to achieve synergies with Solvency II and other completed projects.

An efficient implementation project will require seamless collaboration between finance and actuarial teams. The complexity of transition will demand a much wider range of skills and an agile and multi-disciplinary approach, involving IT specialists, data analysts and experienced project managers.

To be successful in an environment of competing priorities and strain on resources, insurers will have to:

- plan and deliver the IFRS 17 transition in a holistic manner
- secure executive sponsorship by communicating early the implications reaching beyond financial reporting
- mobilise project teams early
- implement rigorous project management routines.

Training

Develop and deliver training for your staff and Board:

- Interactive training and series of workshop
- Understanding of new KPI and impact on disclosures

Impact assessment

Perform gap analyses and assess the impact of policy choices on transition on:

- Financial statements and management information
- Accounting and actuarial processes
- Business processes and operations
- Skills, resources, systems and data

Programme planning and management

Develop and manage the programme for transition:

- Track against a clear roadmap and stay on budget
- Incorporate lessons learnt from Solvency II, models and data
- Build on and improve existing processes
- Develop a 'blue print' to integrate core systems
- Engage in a timely way with you and your auditors on key judgements
- Suggest workarounds to resolve gaps and limitations

Modelling and systems requirements

Support you to develop and justify significant estimates and related models in the areas of key judgement:

- Analysis of product profit profiles and level of aggregation
- Approach for CSM calculation on transition and subsequent data capture
- Methodology for determining the discount rate (explore synergies with Solvency II)
- Methodology for calibrating the risk adjustment

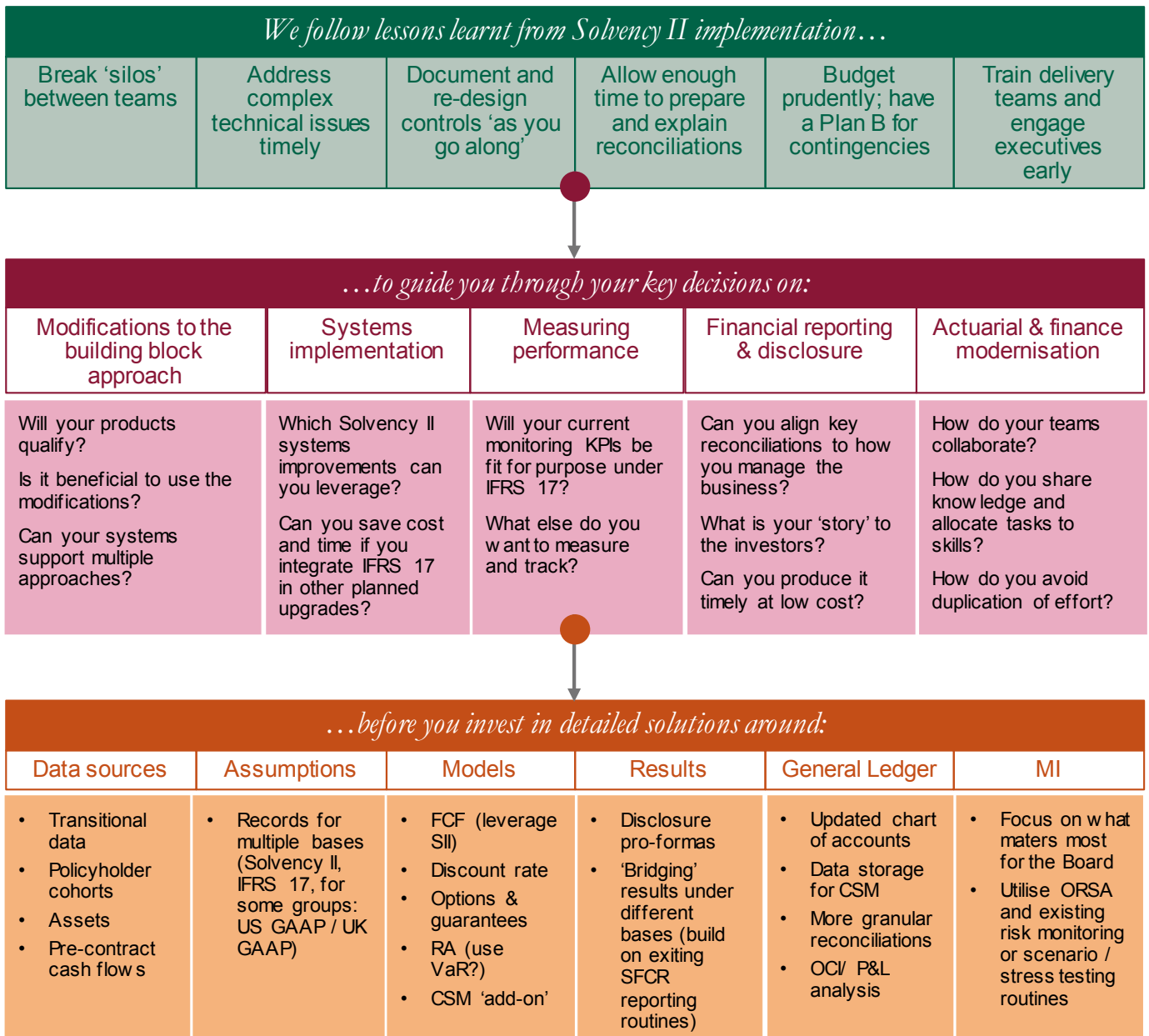
Move to business as usual

Deliver your project to budget and transition to 'business as usual':

- Track progress closely through to project closure, debrief and share lessons with your wider team
- Design, test and implement the business as usual processes and controls
- Provide assurance and post implementation assistance
- Design a plan for continuous improvement in IT, data and modelling

We keep it simple and practical

IFRS 17 implementation will disrupt established operating models. A clear vision about the 'end state' and alignment with business steering is crucial for your success. We provide a simple and practical solution for a maximum return of your project investment.



A sample of our experience

IFRS conversion and improvement in controls for a Reinsurer

We delivered an IFRS conversion for the UK subsidiaries of a major reinsurer. The project involved the resolution of material prior period errors, rectification of data quality issues and errors in the configuration of monitoring reports. In addition to various technical accounting challenges, we managed a complex group of stakeholders involving the external auditors, consultants on a Finance Transformation program and the Head Office Finance team of the parent company.

Implementation of significant reduction in close times for UK listed insurer reporting capital results

We were engaged to design the Target Operating Model (TOM) for the Solvency II capital process covering financial and actuarial elements. A deep dive was performed on the capital aggregation processes resulting in significant working day savings being driven out through the implementation. The design allowed the insurer to deliver on both market and solvency reporting deadlines.

Rationalisation of finance and actuarial processes and models in the UK listed insurer

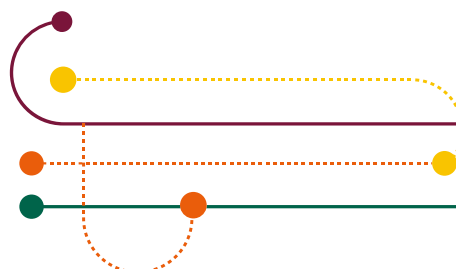
We developed the TOM for a large domestic listed insurer. The initial part of the project involved an assessment of ultimate needs against the "as-is" position, including all aspects of the finance and actuarial TOM. Workstream packages were developed to deliver the tactical and strategic phases of the project. We led on three of the detailed workstreams setting out the planning activity to deliver the TOM.

Improvement in controls for UK listed insurer

We reviewed the controls around a capital model for a listed insurer. This included identifying risks in the process, controls mitigating these risks and looking at the design, operation and evidencing of these controls. We identified a number of areas for improvement both in the control environment and also in the efficiency of the processes.

Integration of two finance divisions for listed insurer with significant resulting cost savings

We delivered an integration project combining the finance functions of two leading UK insurers. The integration work covered the actuarial aspects of the integration of the Chief Actuarial Team and the broader Finance function. Key focuses included the design of the TOM for the technical finance teams, devising an offshoring programme for the business, assessment of duplication of tasks and simplification of the processes. These actions resulted in a significant reduction in business costs.



About Grant Thornton

Grant Thornton International Ltd

- One of the world's leading organisations of independent assurance, tax and advisory firms
- Combined turnover of \$4.7 billion
- Over 40,000 people based in over 130 countries.

Grant Thornton UK LLP

- UK member firm of Grant Thornton International Ltd
- Turnover of £512 million
- Led by over 185 partners, with 4,500 people
- Operates from 25 offices.



Accountancy Firm of the Year (Larger Clients) FD Excellence Awards 2014



Best managed international firm MPF Awards for Management Excellence 2014



Best Tax Team in a National Firm Corporate and International Tax and Transfer Pricing team LexisNexis Awards 2014



Ranked number one corporate finance adviser in the UK 2014, 2013, 2012 (Source: Experian Corpfin)



Corporate Finance Advisory Team of the Year Bristol Corporate Finance team South West Insider Dealmakers Awards 2014



Global Firm of the Year British Accountancy Awards 2013



Employer of the Year International Accounting Bulletin (IAB) 2014



UK Transfer Pricing Firm of the Year International Tax Review European Tax Awards 2014



International Accounting Bulletin Network of the Year 2013



Private Client Practitioner Top 25 Accounting Firms 2014

Contacts

Simon Perry

IFRS 17 Lead

T +44 (0)20 7184 4721
E simon.perry@uk.gt.com



Vasilka Bangeova

Financial Reporting Lead

T +44 (0)20 7865 2379
E vasilka.l.bangeova@uk.gt.com



Valerie du Preez

Actuarial Lead

T +44 7584 268 403
E valerie.du.preez@uk.gt.com



Roy O'Neil

Operational Lead

T +44 (0)20 7865 5240
E Roy.ONeil@uk.gt.com



Simon Sheaf

Non Life Insurance Lead

T +44 (20) 77283280
E simon.h.sheaf@uk.gt.com



Manu Sharma

Finance Technology and Data Lead

T +44 (0) 7966 623524
E manu.sharma@uk.gt.com



Howard Jones

Tax Lead

T +44 (0)20 7184 4568
E Howard.Jones@uk.gt.com



Sarah Talbott

Internal Audit Lead

T +44 (0)20 7865 2815
E sarah.d.talbott@uk.gt.com



Stuart Riddell

Business Consulting Insurance Lead

T +44 (0)131 659 8528
E stuart.w.riddell@uk.gt.com



Stephen Robinson

Actuarial Analyst

T +44 (0)20 7184 4485
E stephen.robinson@gt.uk.com





© 2017 Grant Thornton UK LLP. All rights reserved | Public

'Grant Thornton' refers to the brand under which the Grant Thornton member firms provide assurance, tax and advisory services to their clients and/or refers to one or more member firms, as the context requires.

Grant Thornton UK LLP is a member firm of Grant Thornton International Ltd (GTIL). GTIL and the member firms are not a worldwide partnership. GTIL and each member firm is a separate legal entity. Services are delivered by the member firms. GTIL does not provide services to clients. GTIL and its member firms are not agents of, and do not obligate, one another and are not liable for one another's acts or omissions.

This proposal is made by Grant Thornton UK LLP and is in all respects subject to the negotiation, agreement and signing of a specific contract/letter of engagement. The client names quoted within this proposal are disclosed on a confidential basis. All information in this proposal is released strictly for the purpose of this process and must not be disclosed to any other parties without express consent from Grant Thornton UK LLP.

grantthornton.co.uk

GRT105089